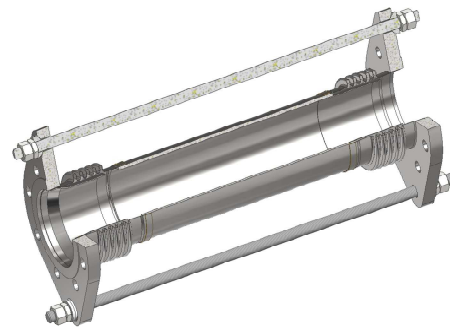


Tied lateral Expansion Joints

Tied lateral expansion joints (commonly referred to as articulated expansion joints) incorporate two 'sets' of convoluted stainless steel membranes joined together by a central connecting spool or pipe and are designed to absorb relatively large amounts of lateral travel (these units can also be supplied to offer relatively small amounts of axial travel).



Tied Lateral Expansion Joints are 'restrained' expansion joints, with the integral tie- bar assembly designed to restrain the pressure thrust generated when the unit is operating under pressure, thus relatively light anchors and guides may be utilised as only minimal forces are transferred to the adjacent pipe work installation. Tied lateral expansion joints are often utilised on pipe systems carrying steam, water, oil and condensate, or to accommodate building and storage tank settlement.

Construction options can include;

- 50mm- 3000mm DN inclusive
- Lengths to suit
- Multiply convoluted membranes
- Bellows Technology stainless steel expansion joints can be supplied with flanged, weld-end or slotted terminations in line with our customers' requirements
- Material combinations can include stainless steels, carbon steels and high alloy 'exotic' materials
- Internal flow sleeves and liners
- Fixed and/or Swivel flanges
- External protective shrouds
- Specialist flange coatings
- Non Destructive Testing

Call on our experience

+44 (0) 1663 745873

BELLOWS
TECHNOLOGY LTD